



# **Serial Port Connection Guide to Uniview Cameras**

Title:	Serial Port Connection Guide to Uniview Cameras	Version:	V1.1
Product:	IPC	Date:	9/26/2023

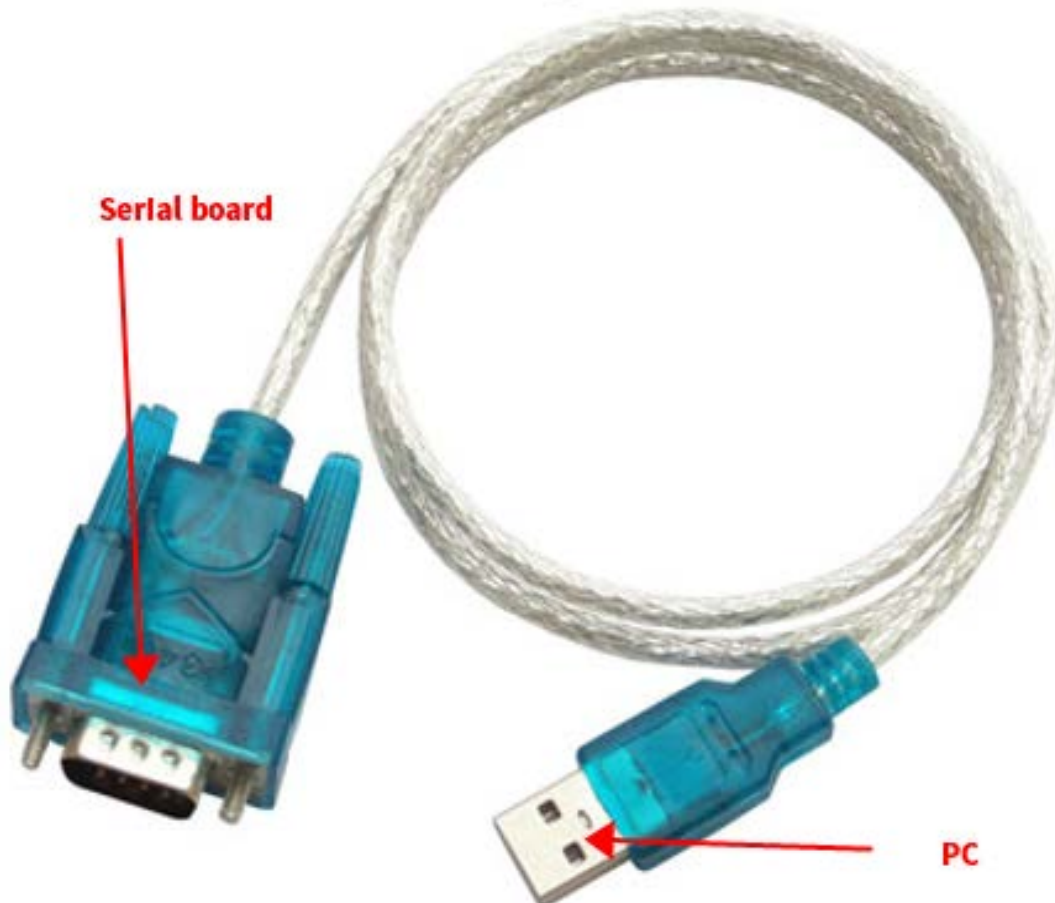
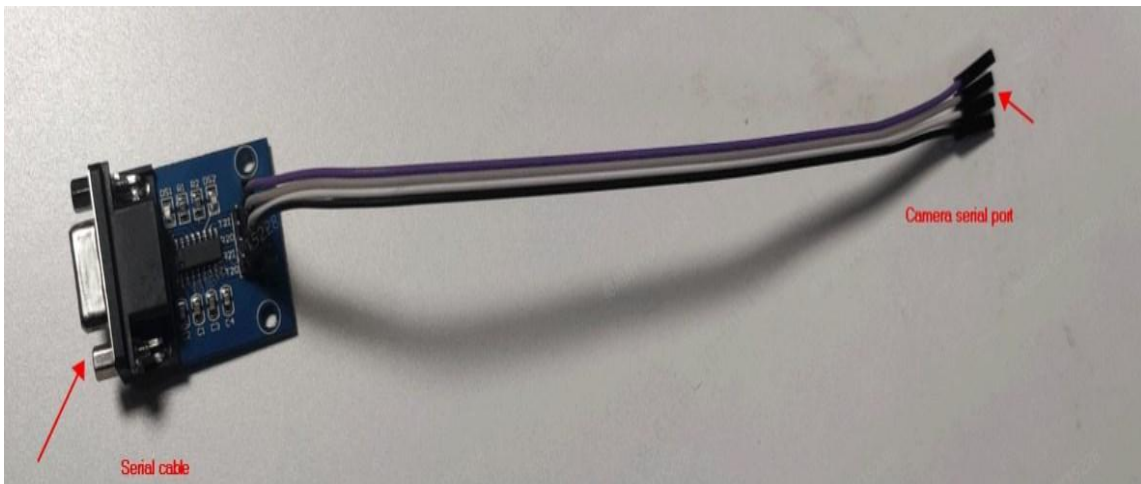
# Serial Port Connection Guide to Uniview Cameras

## Description

A serial cable connection applies to circumstances when a camera goes hung and when normal methods for accessing the camera do not work. It is usually for maintenance purposes.

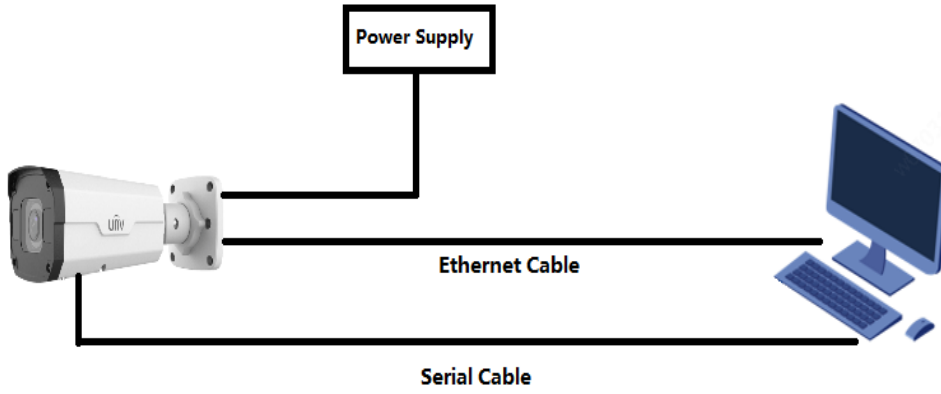
## Preparation

### 1. Serial board & serial to USB cable



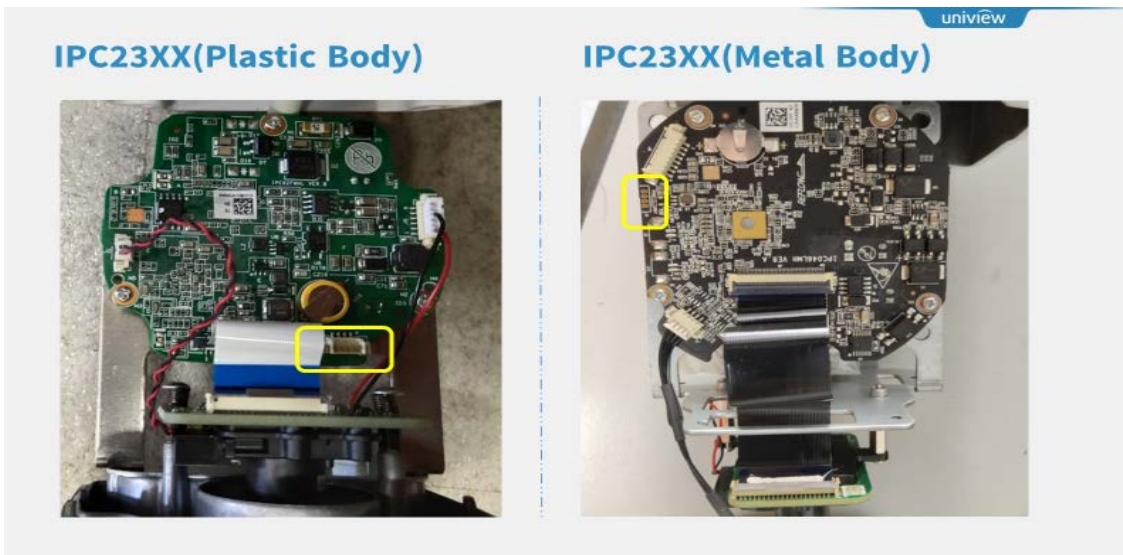
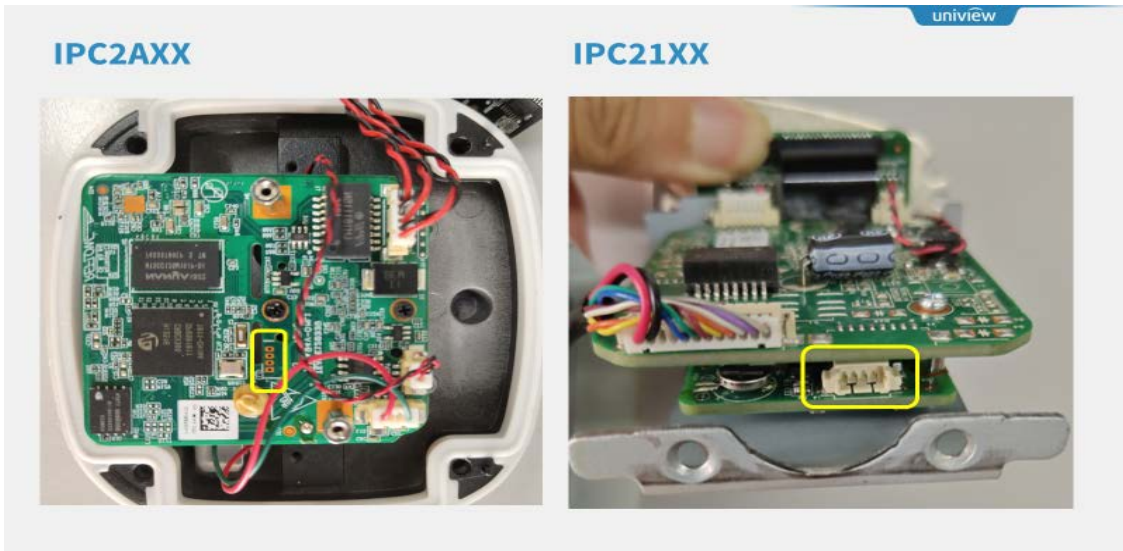
Title:	Serial Port Connection Guide to Uniview Cameras	Version:	V1.1
Product:	IPC	Date	9/26/2023

## 2. Device Connection



## 3. Locations of serial port for different cameras:

### Bullet Camera



Title:	Serial Port Connection Guide to Uniview Cameras	Version:	V1.1
Product:	IPC	Date	9/26/2023

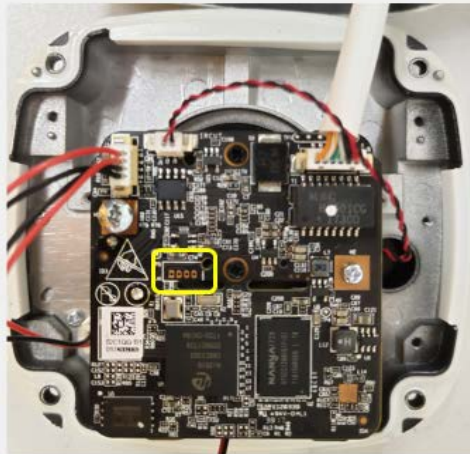
### IPC25XX



### IPC25XX(Thermal)



### IPC24XX



### IPC26XX



## Mini Bullet Camera



2122L



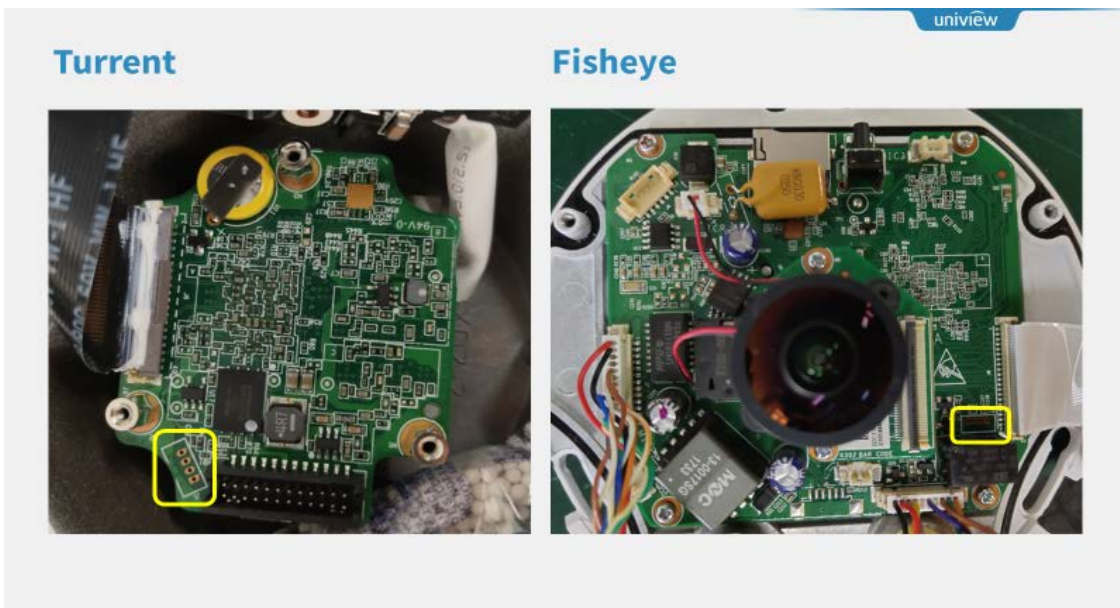
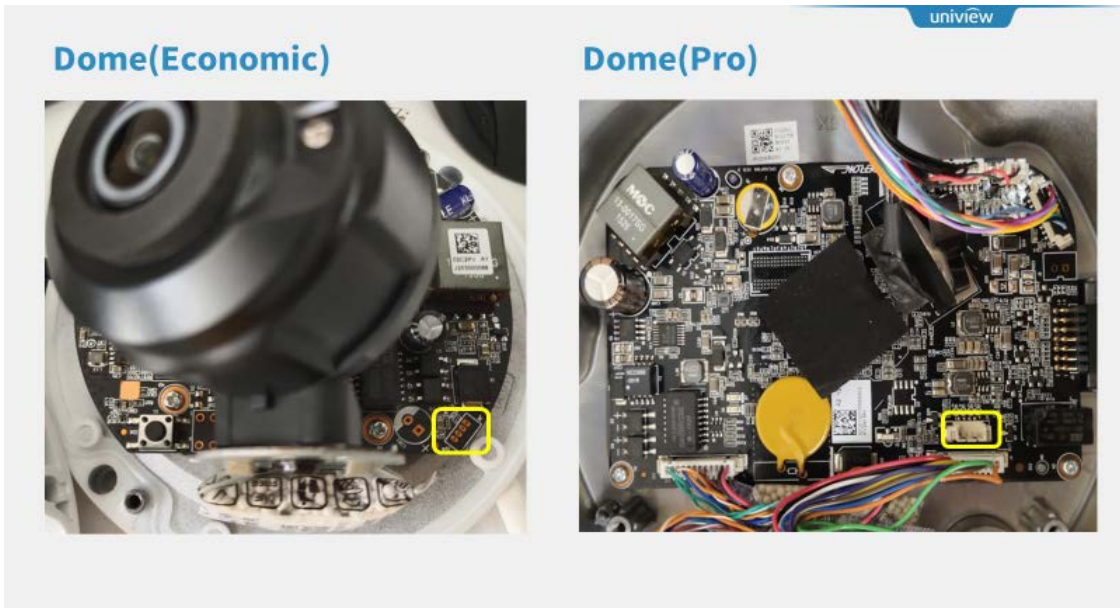
2125LE



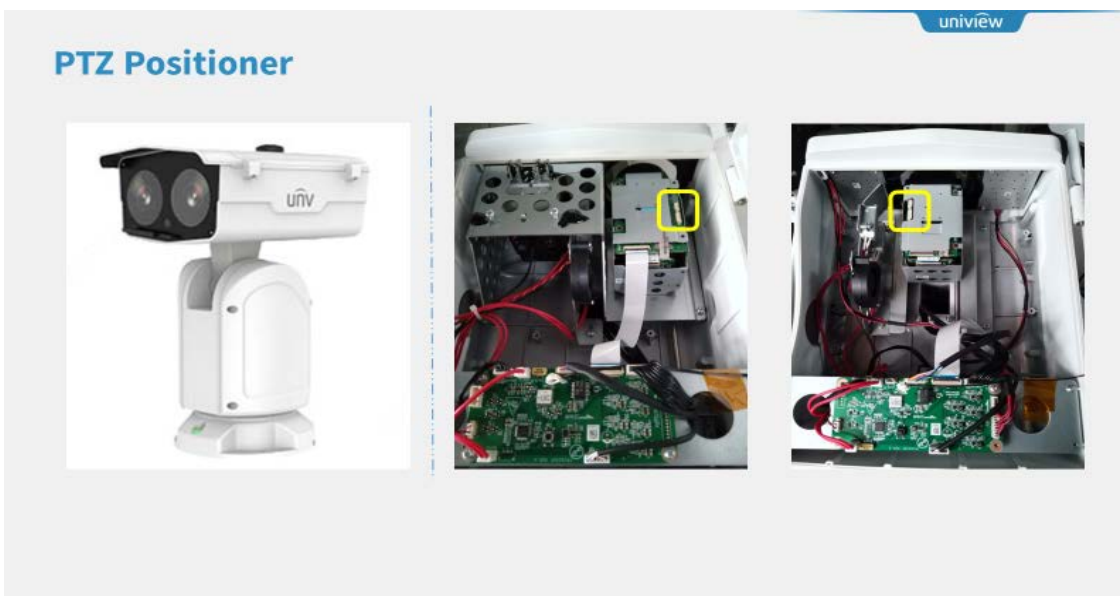
2315SB

Title:	Serial Port Connection Guide to Uniview Cameras	Version:	V1.1
Product:	IPC	Date	9/26/2023

## Dome Camera

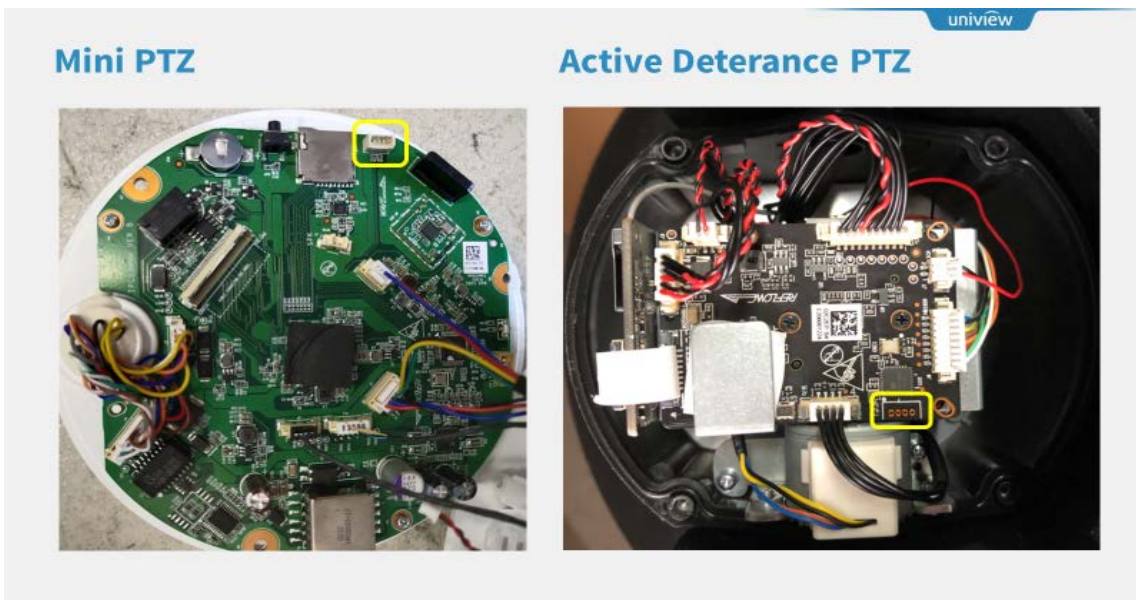
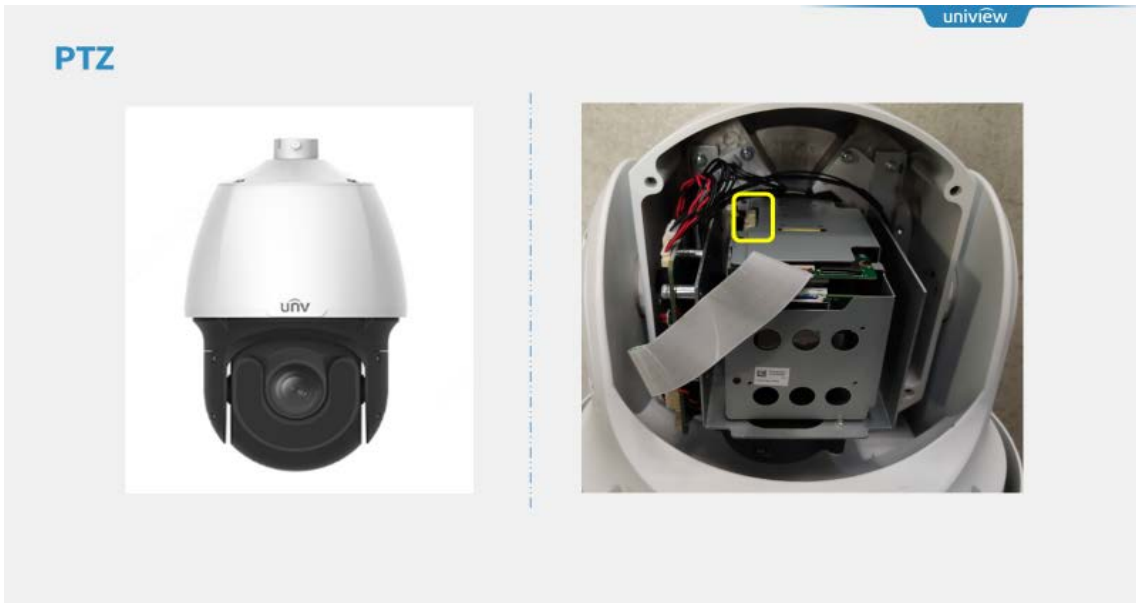


## PTZ Positioner



Title:	Serial Port Connection Guide to Uniview Cameras	Version:	V1.1
Product:	IPC	Date	9/26/2023

## PTZ Camera



## Multi-lens / Panoramic Camera

